

DLH is a mission-oriented company with decades of experience in **simulation and training** supporting both civilian and military organizations.

The **R.A.P.I.D.** (Real Time Assessment and Personalized Instruction on Demand) platform infuses groundbreaking technology with our unique experience to make a state-of-the-art learning platform.

Hosted on our in-house, **FedRAMP certified fully cloud-delivered service, InfiniByte® Cloud**, our platform helps learners achieve mastery faster than ever.



National Capital Region Headquarters

8757 Georgia Avenue
12th Floor
Silver Spring, MD 20910

Atlanta Headquarters

3565 Piedmont Road, NE
Building 3, Suite 700
Atlanta, GA 30305

Research Triangle Headquarters

4505 Emperor Blvd
Suite 400
Durham, NC 27703

Key Customers



What is an eMicro-Simulation?

eMicro-Simulations (eMicro-Sims) are short screen-based simulations designed to enable scenario/case based interactive, critical thinking, decision making experiences with data analytics in a psychologically safe environment. DLH R.A.P.I.D.'s simulation scenarios advance critical thinking, decision making skills, confidence, and outcomes, all packaged with a strong remediation and data model.

EDUCATION



Proven and effective way to educate, learn and retain subject matter.

TRAINING



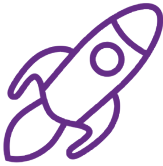
Economical training format that is convenient and cost-effective.

COMPLIANCE



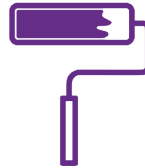
Consistent with compliance standards to reduce liability.

READY TO GO



Just add your content or edit any of our templates and you are ready to launch. Publish to industry standard files with a click of a button.

EASY CUSTOMIZATION



Make changes in minutes to your scenario or case. No need to hire a programmer or wait for someone else.

LIBRARY



Choose from our current library to use "as is" or edit and create a version specific to your organization.

Overall Knowledge and Knowledge Application Confidence Matrix



Overall Knowledge and Knowledge Application Confidence Matrix



Deploy Everywhere

Try a demo today

